

BOAT HOUSE BULLETIN®



A Factual Report from Mercury Marine

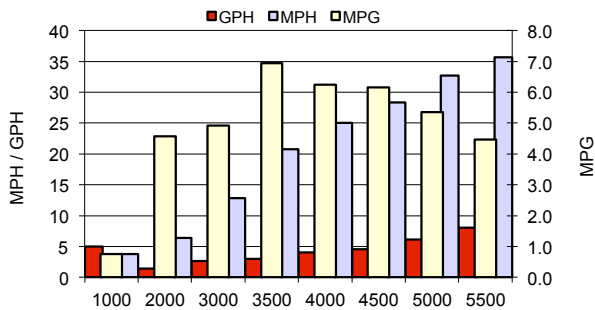
TEST CONDITIONS

Test Date	6/19/12
Test Conductors	MS/RM
Boat Weight as Tested (pounds)	1375
Air Temperature (degrees Fahrenheit)	85
Elevation (feet)	1020
Wind Velocity (MPH)	0-10
Fresh/Salt Water	Fresh
Fuel Level at Testing (gallons)	12

PERFORMANCE SUMMARY

Top Speed (MPH @ RPM)	42.2 @ 6290
Acceleration 0 - 20 MPH (Seconds)	4.8
Acceleration 0 - 30 MPH (Seconds)	7.2
Best Fuel Efficiency (MPG @ MPH)	6.9 @ 20.8

PERFORMANCE CURVE



PERFORMANCE DATA

RPM	SPEED	FUEL	FUEL
RANGE	MPH	GPH	MPG
1000	3.8	5	0.8
2000	6.4	1.4	4.6
3000	12.8	2.6	4.9
3500	20.8	3	6.9
4000	25	4	6.3
4500	28.3	4.6	6.2
5000	32.7	6.1	5.4
5500	35.7	8	4.5
6000	40	9.6	4.2
6290	42.2	10.3	4.1

ENGINE SPECIFICATIONS

Engine	Mercury FourStroke
Horsepower	115
Cylinders	4
Gear Ratio	2.33:1
Model Number	115EFIXL

BOAT SPECIFICATIONS

Boat LOGO

Manufacturer	Alumacraft
Website	www.alumacraft.com
Boat Model	Competitor 175 Sport
Bottom Style/Paint	Deep V
Material	Aluminum
Length	17'8"
Beam	95"
Transom Height (inches)	25
Transom Angle (degrees)	15°
Max HP Capacity	150
Fuel Tank Capacity (gallons)	27
Steering Type	Hydraulic
Dry Boat Weight (pounds)	1375
Mounting Bolt Hole (outboard)	#2

PROPELLER SPECIFICATIONS

Part Number (RightHand)	8M8026590
Part Number (Left Hand)	
Mercury Name	SpitFire
Material	Aluminum
Diameter/Pitch	12.8 X 17
Number of Blades	4
M/C Bravo Three Propeller	
Part Number (Forward)	
Part Number (Rear)	

MERCURY MARINE PO BOX 1939 FOND DU LAC, WISCONSIN 54936-1939

©2012 Mercury Marine, All Rights Reserved. Results on individual boats may vary depending on many factors, including weather and the condition of propeller, lower unit and boat bottom. Boat information based on manufacturer's published specifications.

800-MERCURY MERCURYMARINE.COM